

Mokutaro wrote many poems and published the collections of them with the collaboration of Hakushu Kitahara, a famous poet in those days.

Mokutaro also left a lot of work in the fields of drama, Christianity, art history and medicine.

Such an environment of Yukawa area, the beach and etc. might have fostered his sensitivity to bring about such remarkable achievements in his later days.

1- 20) ITO MARINE TOWN

A stop-in place for travelling drivers come and go now converted into a concourse where you can enjoy various types of souvenir shopping including an ocean bazaar , many types of restaurants ,a genuine hot seaside spa , a cruising tour around Ito bay and



etc.,etc. A very good yacht anchorage has recently be reformed. The place is located alongside national route 135 near Orange beach (Ito beach).

2) JOGASAKI & MT.OMURO

2-1) MT. OMURO (OMUROYAMA)

One of the most popular viewing spots in Ito. The mountain is about 580 meters above sea level and this bowl-shaped volcano has a beautiful crater . The



mountain is said to have erupted about 4,000 years ago. A rope way will lead you to the mountain top where you can see a panoramic view of Sagami Bay dotted with seven islets which we call "Izu Shichito" including an island called "Izu Oshima . "

If you are lucky enough , you will also see a graceful sight of Mt. Fuji. The scene will surely be breathtaking in a fine day.

2-2) SAKURA NO SATO

“Sato” will literally be translated as “village” , but the place had better be called as “Sakura Park”.

It is located at the outskirts of Mt. Omuro where visitors sometime visit together with neighbouring Shaboten Koen [cf (2-5)] .



Various types of cherry blossoms give a pleasure of viewing them in any season of the year as a lot of different species of cherry trees are planted in the park.

You would also enjoy full bloom of the rape blossoms at the beginning of the spring.

2-3) JOGASAKI KAIGAN



We usually translate “ Kaigan” as a seaside but, to be precise , this area is a coastline of cliffs formed by a lot of lava. The area had emerged by a huge volume of lava gushed down from Mt. Omuro when it erupted about 4,000 years ago. Alongside the cliff lines , a promenade for visitors is provided

to see many historical places such as a marine park , many historic capes , a suspension bridge ,tourist cruising boats and so on. So many historical promontories , each of which has a legend that will impress you in terms of Ito’s historical growth. If we may , could we suggest you to visit a suspension bridge near at Kadowaki light house . The bridge is also called “Hanshiro Otoshi” (from where Hanshiro fell into the sea on the way back home . Since then Oyoshi , his wife came here every day to lament his death ……)

The suspension bridge between the cliffs has been completed in the 43 rd year of Showa era.

The breathtaking view would surely brand on your memory of visiting here. The Kadowaki light house at the same location is also used as an observatory.

2-4) IZU KAIYO KOEN (IZU MARINE PARK)

Located in the midst of Jogasaki coastal town , commanding a panoramic view of Sagami Bay.

20 to 40 species of colorful flowers can be enjoyed throughout four seasons. Swimming pool facilities are available at summer break. About 230 species of hydrangea



amuse the visitors particularly in the season during May to September.

2-5) IZU SHABOTEN KOEN (KOEN means PARK)



This park is located under the lower slopes of the Mt. Omuro . 1,500 species of cactuses (shaboten) and some succulent plants together with little and cute birds and animals amuse the visitors , particularly , babies and children. A chimpanzee's show and an attraction by birds and little animals are the favorites among children.

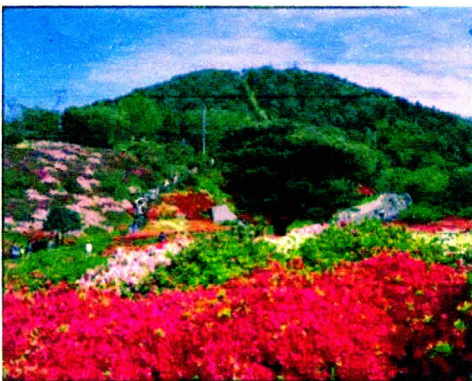
2-6) IZU GRANDPAL PARK (Grandpal , a composite word of English and French)

The amusement park is located alongside National Route 135 in Izu Kogen town near Izu Kaiyo Koen. 【 cf (2-4)】

This is a composite type of playground where children can enjoy various types of game and recreation facilities. The park is also located not so far from Sakura no Sato. 【 cf (2-2)】



2—7) MT. KOMURO (KOMUROYAMA)



A very similar type of mountain to Mt. Omuro ; about 321 meters above the sea level but has no crater. Lava gushed from the volcano by the eruption about 15,000 years ago flew out to the shore and seem to have formed the plateaus such as Kawana and its surroundings. You can enjoy the same panoramic view as Mt. Omuro together

with a vista of Kawana Hotel , one of the leading hotels in this country with its golf courses showing undulating slopes giving you relaxing atmosphere. You can enjoy full bloom of azaleas and camellias in the season of May and October—April respectively in the place.

2—8) WAX DOLL MUSEUM

The museum is located very near to “Sakura no Sato”. 【cf (2-2)】

Inside the museum there are displayed many life-sized wax statues made by world-famous artists.

They all give you an impression as if they were lifelike. The statues are such as Mahatma Gandhi, The Last Supper by Leonardo da Vinci , Michael Jackson , Beatles , Charles Spencer Chaplain , Yujiro Ishihara (a Japanese film actor) and other works of art by a contemporary Mexican artist etc. are displayed .



3) IPPEKIKO AREA

3—1) IPPEKIKO (LAKE IPPEKI)

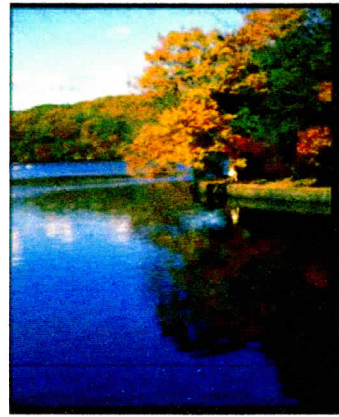
“Ko” means the same as “Ashino Ko” in Hakone or “Biwa Ko” in Shiga prefecture.

Ippeki will be translated as “very blue all around” , so the lake would have been the one with a very blue colour.

Ippekiko is a crater lake formed by the eruption of a mountain (probably Mt. Omuro) very long time ago .

The promenade surrounding the lake would be round about 4 kilometers and visitors also enjoy fishing and simple water sports .

More importantly , however , the lake is a valuable source of water supply for the neighboring Ito citizen which has been continued quite a long time from of old . The lake is located near to Ikeda Museum of 20th century art . [cf (3-2)]



3—2) IKEDA MUSEUM OF 20th CENTURY ART



The museum has been donated by Eiichi Ikeda , a businessman , and opened in May 1, 1975.

It stores up 1,300 excellent works by great artists of 20 th century ; (540 items from overseas , 760 items of Japan).

The great artists include ones like Renoir , Roualt , Picasso , Chagall , Miro , Dali , etc.,etc.

The museum is located by the side of Ippekiko Lake not so far from Izu Shaboten Koen. [cf (2-5)]

4) THE HISTORICAL PERSON

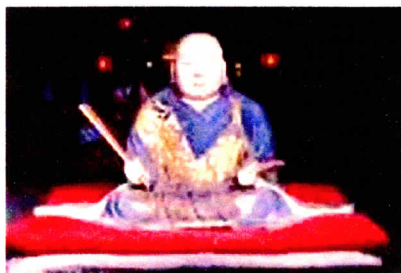
4—1) MINAMOTO NO YORITOMO (1147~1199)

Minamoto no Yoritomo is a First Shogun of Kamakura Shogunate (1185~1333). This Shogunate was the first one governed by Samurai. His father is Minamoto no Yoshitomo and one of Yoritomo's younger brother, Yoshitsune is very popular among us as



a general who courageously fought in the battles between the Genji and the Heike clans. Yoritomo had been caught in 1159 at one of the above mentioned battles and sent to Izu at the age of 14 to live in an out-of-the-way place called Hiruga Kojima in Nirayama. However, Sukechika Ito, a samurai general from the Kudo clan ruling Kano and Ito areas, extended great assistance to this young Yoritomo. A story of Yoritomo in Izu, indeed, cannot be talked about without mentioning the name of Sukechika Ito who had extended tremendous support to Yoritomo. Sukechika's daughter Yaehime and Yoritomo are blessed with a child, however, in later days, they had to be separated and also the child had been killed due to the political strife. Finally, Sukechika even went so far as to slay Yoritomo due to the political reason. Knowing this by one of Sukechika's relatives, he escaped from Ito and got himself out of the disaster. Yoritomo's life in Ito thus came to an end. Soon after the refuge, Yoritomo established Kamakura Shogunate in 1185 and assumed a position of first Shogun. The whole family of Ito clan had stretched their descendants up to Kyushu and Tohoku areas and so did the Usami clan. This might have been the greatest inheritance that Yoritomo left in Ito.

4—2) NICHIREN



Nichiren is a Buddhist priest and the founder of Nichiren and Hokke denominations. He was born in Chiba, the place called Awanokuni at the time. He started ascetic practices at the age of 12 and became enlightened after four years to establish Nichiren denomination in 1253. Due to his criticism against other denominations, however, he was accused of the critic and exiled to Ito. He seems to have arrived somewhere around Kawana and was rescued by a fisherman called Yasaburo Funamori. Nichiren was sheltered in the house of Ito Hachirozaemon, a lord of manor in this area. Nichiren is also said to have cured Hachirozaemon's illness by his earnest and continuous prayer. Ito people those days were not cooperative to Nichiren as the most of them believed in Nenbutsu denomination. Nichiren, however, in this adversity, wrote several valuable books on his belief. He stayed in Ito about three years and returned to Kamakura after receiving pardon from the Shogunate at his age of forty two. Kaikozaan Butsugenji Temple is the vestige of Nichiren which remains as an exceptional head temple of Nichiren denomination. By the way, Ito Hachirozaemon, a lord manor, had been converted to Nichiren denomination after he met with him.

4—3 William Adams (1564~1620)

William Adams was born in England in 1564, the year that famous William Shakespeare was born. In 1598 after studying the art of navigation, he joined a Dutch merchant fleet as a chief navigator. Unfortunately, however, he was shipwrecked off the shore of Northern Kyushu in 1600; no choice but to land in Japan.



After he interviewed with Ieyasu (1st Shogun in Tokugawa Shogunate), he was appointed to the post of advisor to foreign affairs.

In 1604~1605, by an order of Ieyasu, he built two Western style sailboats at Ito and settled down in Miura. Then, he was called as “Miura Anjin (三浦 按針)” to become “a samurai with blue eyes.”

Anjin means “piloto” in Portuguese and “pilot” in English. He also married Japanese lady called Oyuki and was blessed with two children.

After working at British office of a foreign merchant, he died in Hirado ,Nagasaki,in 1620 at the age of fifty six. He also had a wife and two children in England.

Ito City grandly holds “Anjin Festival (Anjin –Sai)” every year on the 10th of August ever since Ito has been incorporated as a city.

The festival commemorates his great achievement of building two Western type sailboats in Ito .

4—4) HAMAGORO HIDA



Hamagoro Hida was a navy officer played an active part in Japanese Navy of Meiji era. He came from Yawatano,Ito. He was a retainer to Tarozaemon Egawa, a local administrator living in Nirayama, Izu. He served for the Egawa family and Egawa recommended him to the Nagasaki Navy Academy. There, Hida learnt the navigation technology of a steamship as well as its building method. He is well known as a chief engineer of Kanrin Maru(a Japanese warship built in 1857). This warship succeeded in navigating across the Pacific Ocean for the first time by Japanese navigator. Hida also made an engine of a battleship which was built for the first time in this country, the one called “Chiyoda-type warship”.

5) MISCELLANEOUS

5— 1) USAMI KANNONJI (USAMI KANNONJI TEMPLE)

The headquarters of Nichiren New Hokke Buddhist denomination.

The temple is located halfway up the Usami skyline , the northwest of Usami town. Kannon is the Goddess of Mercy in Buddhism . A huge white Buddhist statue can be seen everywhere from Usami area. Usami Kannonji , the headquarters of a Buddhist sect , holds 20,000 images of Buddha for the repose of miscarried children.

The Seven Deities of Good Luck are made of white granite , 2 meters high , 2 tons weight , the topmost statues in this country.

A bone of Buddha has been dedicated from Nepal to be enshrined in a gorgeous hall in the temple.

5— 2) AMAGI KOGEN (KOKEN means HIGHLAND)

The area is about 900 meters high above sea level covering the Amagi mountain range . Town name "Izu Kogen" might have originated from this Amagi mountain range.

Up around there , people enjoy hiking to the nearby mountains ; 600 species of begonia flowers and golfing in a hot summer day will give you a lift of refreshing feeling in this Amagi Kogen area.

5— 3) SPOTS GOOD FOR SEA BATHING

May we suggest the places like Orange beach (Ito) , Usami beach (Usami) and Kawana beach (Kawana) for nice sea bathing places where you could also enjoy an easy boat fishing and a boat tour .



5— 4) GOLFING AROUND ITO AREA

	phone	address
Kawana Golf Course	0557-45-1111	1145 kawana Ito City
Amagi Kogen Golf Course	0557-29-1133	638-83 Sugabiki ,Izu City
Ito Country Club	0557-36-5865	694-1 Ogi , Ito City
Gold Kawana Country Club	0557-45-1151	834 Yoshida , Ito City
Southern Cross Country Club	0557-45-1234	1006 Yoshida , Ito City

5— 5) MEDWAY CITY

Gillingham City and Rochester City in England merged into a new city in 1982 and it was called Medway City.

The city formerly called Gillingham is the place where William Adams was born in 1564 ; what a coincidence that famous William Shakespeare was born in the same year.

This newborn city of Medway is located 48 kilometers southeast from London down the lower reaches of Medway river . Medway City is making rapid progress in the field of shipbuilding , manufacturing containing materials and the cultivation of various types of flowers. Such being the case , Ito citizens visited Gillingham for the first time in 1964 and presented several pieces of pictorial and calligraphic work made by Ito children .

The two cities , hence , started to hold Medway—Ito children's Art Exhibition every year since 1973 on the occasion of Anjin Festival in Ito . Also , Ito City , tied up with the city of Yokosuka , has concluded a friendly treaty with Gillingham City (now Medway City) in 1982 .

Since 1990 , high school student exchange programme has also started between Medway and Ito.

この小冊子はISGG会員が外国人の案内用として作成した。

翻訳はISGG 佐藤泰吉 会員が担当して完成させた

尚、参考資料として多くの公知文献を使用した。以下その一例を示す。

<参考資料>

- 1) 伊東自然歴史案内人会資料
- 2) 「伊東風土記」加藤清志著（サガミヤ選書）
- 3) 伊東一人物詩（伊東市立図書館発行） など

2010年9月

伊東市善意通訳の会

会長 稲葉 尚子